

A world class

# **AIR / GAS** **COMPRESSOR**

# NexKomp

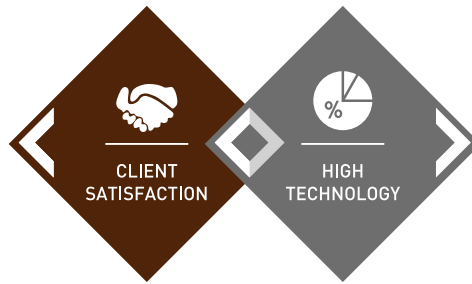
Air / Gas compressor

Leading Manufacturer of Compressor  
DongHwa Pneutec

About Us	03
History	04
Business & Affiliates	05
Product	06
NeX-Br Series – Tank-intergrated Screw Compressor	07
NeX-B / G Series – Oil-injection Screw Compressor	08 - 11
NeF Series – Oil-free Screw Compressor	12 - 13
H Series – Water-cooled High Pressure Piston Compressor	14
CM, AH Series – Air-cooled High Pressure Piston Compressor	15
NeX-M Series – Water-cooled High Pressure Piston Compressor	16
NeX-H Series – Air-cooled High Pressure Piston Compressor	17
Gas Compressor Series	18
Air Cleaning System	19 - 20
Info of Purchase on Spare	21
Global Service Network	22
Location	23



# About Us



**We will do our utmost for the world-class product and customer satisfaction by priority.**

Since its foundation in 1974, as the manufacturer of air compressor & related product for the marine, petro-chemical and power generation industry, DongHwa Pneutec has been focused on research & development, product performance improvement as well as new product development while establishing the most competitive facilities and production processes.

The expert of air compressor with the advanced research and development capability and outstanding ability, DongHwa Pneutec achieved the air compressed system technology and skilled manufacturing technology to serve the highly efficiency and high quality products to our customers. The excellent service of DongHwa Pneutec makes the end-user easy to use our products for long period of time.

Consequently the global market competitiveness was achieved, and we supply our products to the top shipbuilders and power plant and so on. Moreover, the assertive management and high-quality strategy allowed us to develop foreign markets, so that we directly exported our products to owner in abroad and it became a source of foreign exchanges.

The 'compressed air' is an essential part of all industry and every people looks for life in clean and pleasant environment. So we are keeping customer's satisfaction as our top priority, we will continue our utmost efforts to conduct researches. We will spare no effort to contribute growth of local economy and technology development in related industries.



# History

## Half century of challenge, pioneer, change and innovation

Jump up to be world-wide Donghwa Pneutec with a spirit to turn impossibility into possibility.

“We are committed to grow up to become a 100-year-old enterprise by satisfying all of our clients through high technology and know-how accomplished on a basis of confidence.



### 2010 ~ 2016

2011

- 01. Certified as Management Innovation SME (MAIN-BIZ)
- 02. Established additional domestic and overseas agencies
- 03. Certified ISO 14001 (Environmental Management System)
- 05. Developed refrigerant compressors and gas compressors for SOx reduction device
- 10. Certified as Technology Innovation SME (MAIN-BIZ)
- 11. Awarded Ten Million Dollar Export Tower
- 12. Selected as Busan City Leading Company

2012

- 12. Developed ultra-high pressure compressor for breathing (NeX-HA Series)

2013

- 03. Developed small-sized, light weight medium pressure air compressor (NeX-V Series)
- 06. Acquired OHSAS 18001 Certificate (Occupational Health and Safety Management System)
- 06. Selected as ATC Business (Advanced Technology Center)

2015

- 09. Selected as Export-oriented enterprise
- 10. Moved to owned factory in the Mieum State Industrial Complex

2016

- 05. Awarded Hidden Champion



### 2000 ~ 2009

2000

- 03. Released marine air compressor for large-sized ships (H-TYPE)

2001

- 03. Moved to Noksan Industrial Complex

2002

- 07. Completed localization of H-TYPE componets (TANABE, INC.)
- 11. Separated its affiliate to Jonghap Pneutec

2006

- 10. Established own R&D Center
- 11. Awarded Three Million Dollar Export Tower

2007

- 06. Developed and applied patent for the world's first marine low-vibration air compressor (HLV Series)
- 10. Changed its name to Donghwa Pneutec
- 11. Awarded Five Million Dollar Export Tower

2008

- 03. Certified as Parts and Materials Specialized Company

2009

- 03. Developed Screw compressors for industry (NeXKomp Series)
- 04. Certified as Venture Company



### 1970 ~ 1999

1974

- 07. Established Jonghap Maritime Inc.

1984

- 11. Technical cooperation with MATSUBARA Inc.
- 12. Commissioned No. 1 marine air compressor (The first domestic production of marine air compressors; CMS Series)

1994

- 07. Technical cooperation with TANABE, Inc.

1996

- 04. Released marine screw type air compressors (ZS Series)

1997

- 04. Released marine air-cooled air compressors (AHW Series)

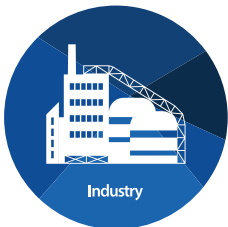
1998

- 11. Acquired ISO 9001 Certificate (Quality Management System)

1999

- 06. Released marine air compressor for large-sized ships (HC Series)

# Business



## Industrial Compressor

Compressed air like electricity is an essential power source for all industries. It is non-environmentally polluting, safe from explosion and ignition and easy to store and transport; therefore, it is being used in various fields including construction, tools, chemicals, steel, food, and semiconductors.

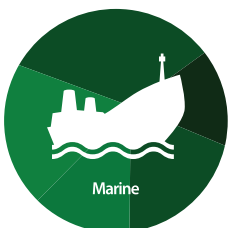
DongHwa Pneutec's industrial compressors are being provided and used in various product groups such as oil free or oil injection; screw or piston; air cooled or water cooled; and others meeting both the pressure and volume customers need.



## Plant Compressors

The specifications of the compressor in the fields of on shore and off shore are very particular. Many compressor manufacturers are trying to enter this market but the markets development for this field is not easy.

Donghwa Pneutec's compressors for plants are being supplied and used for various on shore and off shore fields such as FPSOs, SEMI SUBMERSIBLE RIGS, and DRILL SHIPS as well as a variety of domestic and international power plants.



## Marine Compressors

Compressors which are essential equipment to start ship's engine should be manufactured based on technology ensuring high reliability in terms of durability and safety of products, for the ships cannot operate when failure occurs to this product.

Donghwa Pneutec's marine compressors not only occupy the highest market share in the world market but they have also been used for ballast water treatment systems, air lubrication system for fuel-efficiency recently.

# Affiliates



Donghwa Entec



Donghwa Giyeon



Donghwa Entec (Shanghai)



GAS Entec

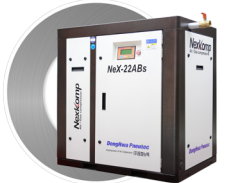
Donghwa Entec, Donghwa Giyeon, Donghwa Entec (Shanghai) : Cooler, Heat Exchanger    GAS Entec : Plant engineering

# Product



Oil-injection Screw Compressor **NeX-Br** Series Tank-intergrated Screw Compressor / Air Dryer-intergrated Screw Compressor

Motor Output (KW)	Capacity (m <sup>3</sup> /min)	Pressure (Bar)	Cooling	Driven Method	Starting Method
5.5 ~ 20kW (7.5 ~ 25HP)	0.75 ~ 1.95 m <sup>3</sup> /min	9 ~ 13 Bar	Air cooled	Poly belt/ Direct	170 (200) / 280L



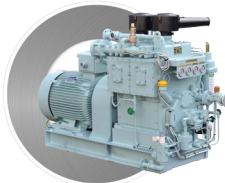
Oil-injection Screw Compressor **NeX-B / G** Series Air cooled, Water cooled / Inverter (option)

Motor Output (KW)	Capacity (m <sup>3</sup> /min)	Pressure (Bar)	Cooling	Driven Method	Starting Method
15 ~ 400kW (20 ~ 540HP)	2.41 ~ 76.9 m <sup>3</sup> /min	7 ~ 13 Bar	Air cooled / Water cooled	Direct	Star-Delta / Inverter



Oil-free Screw Compressor **NeF** Series Air cooled, Water cooled / Inverter (standard)

Motor Output (KW)	Capacity (m <sup>3</sup> /min)	Pressure (Bar)	Cooling	Driven Method	Starting Method
37 ~ 370kW (50 ~ 565HP)	4.68 ~ 58.2 m <sup>3</sup> /min	7 ~ 10.5 Bar	Air cooled / Water cooled	Direct	Inverter



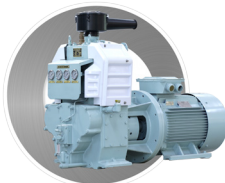
High Pressure Piston Compressor **H** Series Water cooled

Motor Output (KW)	Capacity (m <sup>3</sup> /min)	Pressure (Bar)	Cooling	Driven Method	Starting Method
11 ~ 132kW (15 ~ 177HP)	65 ~ 610m <sup>3</sup> / hr	7 ~ 30 Bar	Water cooled	Direct	D.O.L / Star-Delta



High Pressure Piston Compressor **CM, AH** Series Air cooled

Motor Output (KW)	Capacity (m <sup>3</sup> /min)	Pressure (Bar)	Cooling	Driven Method	Starting Method
3.7 ~ 45kW (5 ~ 60HP)	15 ~ 200m <sup>3</sup> / hr	7 ~ 30 Bar	Air cooled	V belt/ Direct	D.O.L / Star-Delta



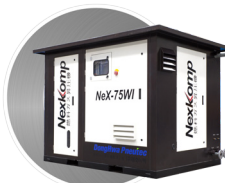
High Pressure Piston Compressor **NeX-M** Series Water cooled

Motor Output (KW)	Capacity (m <sup>3</sup> /min)	Pressure (Bar)	Cooling	Driven Method	Starting Method
19 ~ 90kW (25 ~ 120HP)	110 ~ 405m <sup>3</sup> / hr	7 ~ 30 Bar	Water cooled	Direct	D.O.L / Star-Delta



High Pressure Piston Compressor **NeX-H** Series Air cooled

Motor Output (KW)	Capacity (m <sup>3</sup> /min)	Pressure (Bar)	Cooling	Driven Method	Starting Method
3.7 ~ 37kW (5 ~ 50HP)	7.3 ~ 74m <sup>3</sup> / hr	200 ~ 350 Bar	Air cooled	Belt	D.O.L / Star-Delta



Gas Compressor Series Air-cooled / Water-cooled / Oil-injection / Oil-free

Motor Output (KW)	Capacity (m <sup>3</sup> /min)	Pressure (Bar)	Application
5.5 ~ 420kW (7.5 ~ 560HP)	1 ~ 3,000 m <sup>3</sup> /hr	1 ~ 350 Bar	Gas BOG, Methane, Nitrogen, Argon, Hydrogen, Helium, Carbon dioxide



Oil-injection Screw Compressor **NeX-Br Series** Tank-intergrated Screw Compressor / Air Dryer-intergrated Screw Compressor



[ Housing type ]



[ Open type ]

- Compact Design Compact, tank-integrated unit with easy installation and operation in small or medium-size industrial sites
- Low-noise Minimized noise by applying a low-noise cooling fan and high-efficient absorbing materials with the finest design
- Low-vibration Anti-vibration mounting pad and piping line to ensure to minimize the vibration
- High efficiency High compression efficiency compared to piston type, operation for 24 hours a day, 365 days a year, low maintenance cost due to long life and high safety

**Application**



**NeX-Br Series Air Receiver Integrated Type**

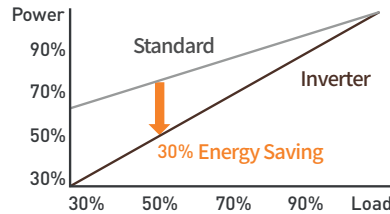
Caution : 1. (D) is the Dryer-intergrated model and the data in the ( ) is the specification of Dryer-intergrated model.  
 2. The data in the [ ] is HP under condition that pressure is 13Bar.

Model	NeX-	5.5Br(D)		7.5Br(D)		11Br(D)		15Br(D)	
Working Pressure (Bar)		9	13	9	13	9	13	9	13
Capacity (m <sup>3</sup> / min / CFM)		0.75 / 26	0.73 / 26	1.14 / 40	1.12 / 40	1.63 / 58	1.61 / 51	1.95 / 69	1.93 / 68
Power Supply (V / Ph / Hz)		200 ~ 460 / 3 / 50 ~ 60							
Motor Output (kW / HP)		5.5 / 7.5 [10]		7.5 / 10 [15]		11 / 15 [20]		15 / 20 [25]	
Starting Type		D.O.L							
Driven Type		Poly belt		Direct		Poly belt		Direct	
Cooling Type		Air cooled							
L.O Capacity (Liter)		8				10			
Air Tank Capacity (Liter)		170 (200)				280			
Outlet Size		PT 3/4"				PT 1"			
Noise Level (dB(A) ± 3)		64		67		68		69	
Size (LxWxH mm)		1200x600x1280 (1550x680x1280)				1500x680x1450 (1800x700x1450)		1500x750x1450 (1600x750x1450)	
Air Dryer intergrated (option)		Included 2 filters							
Weight (Kg)		350 (400)		350 (400)		550 (600)		550 (600)	

**Caution**

1. Some specifications in this catalogue can be changed without notice.
2. The maximum ambient temperature is 45 °C. (Please consult us in case of above 55 °C.)
3. The flow is under the condition of ambient temperature 20 °C, humidity 60 % and at atmospheric pressure.
4. Capacity and power deviation are approximately ± 5%.
5. Dimension size can be changed according to the valve option.

Oil-injection Screw Compressor **NeX-B/G Series** Air / Water cooled / Inverter (option)



**Inverter Unit**

It produces and supplies only the needed amount of compressed air by adjusting the rotational speed of the drive motor, it can save up to 30% in energy costs.

- Low-noise Minimized noise by applying a low-noise cooling fan and high-efficient absorbing materials with the finest design
- Low-vibration Anti-vibration mounting pad and piping line to ensure to minimize the vibration
- High efficiency High compression efficiency compared to piston type, Operation for 24 hours a day, 365 days a year, low maintenance cost due to long life and high safety



**NeX-B / G Series Air cooled**

Caution : (i) is the model with inverter and the data in the ( ) is the specification of model with inverter.  
2. The data in the [ ] is HP under condition that pressure is 13Bar.

Model	NeX-	15ABs(i)	22ABs(i)	30ABs(i)	37ABs(i)	45ABs(i)	55ABs(i)	55AGs(i)	75ABs(i)	75AGs(i)
Capacity (m <sup>3</sup> / min / CFM)	7 Bar	2.54 / 90	3.86 / 136	4.72 / 167	6.93 / 245	7.37 / 260	10.8 / 381		14.6 / 516	
	8 Bar	2.44 / 86	3.65 / 129	4.72 / 167	6.16 / 218	7.34 / 259	10.0 / 353		13.1 / 463	
	9 Bar	2.43 / 86	3.64 / 129	4.71 / 166	6.03 / 213	7.30 / 258	9.6 / 339		12.7 / 449	
	13 Bar	2.41 / 85	3.58 / 126	4.66 / 165	5.80 / 205	6.75 / 238	9.8 / 346		12.2 / 431	
Power Supply (V / Ph / Hz)	200 ~ 460 / 3 / 50 ~ 60									
Motor Output (kW / HP)	15 / 20 [25]	22 / 30 [40]	30 / 40 [50]	37 / 50 [60]	45 / 60 [75]		55 / 75 [100]		75 / 100 [120]	
Starting Type	D.O.L (Inverter)			Star - Delta (Inverter)						
Driven Type	Direct									
Cooling Type	Air cooled									
L.O Capacity (Liter)	18	20					40			
Outlet Size	PT 3/4"	PT 1 1/4"		PT 1 1/2"			PT 2"			
Noise Level (dB(A) ± 3)	70	71	72	74				75		
Size (LxWxH mm)	1200(1550)x 850(850)x 1200(1200)	1220(1570)x 900(900)x 1350(1350)	1300(1700)x 1000(1000)x 1350(1350)	1350(1850)x 1000(1000)x 1450(1450)	1600(2100)x 1050(1050)x 1500(1500)	1900(2400)x 1350(1350)x 1850(1850)				
Weight (Kg)	670 (720)	720 (770)	750 (800)	950 (1000)	1010 (1060)	1560 (1630)		1670 (1745)		

Caution

1. Some specifications in this catalogue can be changed without notice. | 2. The maximum ambient temperature is 45 °C. (Please consult us in case of above 55 °C.)
3. The flow is under the condition of ambient temperature 20 °C, humidity 60 % and at atmospheric pressure. | 4. Capacity and power deviation are approximately ± 5%.
5. Dimension size can be changed according to the valve option.



## NeX-B / G Series Air cooled

Caution : (i) is the model with inverter and the data in the ( ) is the specification of model with inverter.

Model	NeX-	90AB(i)	90AG(i)	110AB(i)	110AG(i)	160AB(i)	160AG(i)	185AB(i)	185AG(i)	
Capacity (m <sup>3</sup> /min / CFM)	7 Bar	17.2 / 607		19.6 / 692		27.9 / 985		32.6 / 1151		
	8 Bar	14.1 / 498		18.3 / 646		27.9 / 985		32.4 / 1144		
	9 Bar	14.0 / 494		18.3 / 646		24.3 / 858		27.8 / 982		
	13 Bar	12.3 / 434		13.9 / 491		19.4 / 685		25.7 / 908		
Power Supply (V / Ph / Hz)	200 ~ 460 / 3 / 50 ~ 60									
Motor Output (kW / HP)	90 / 120		110 / 150		160 / 215		185 / 250			
Starting Type	Star - Delta (Inverter)									
Driven Type	Direct									
Cooling Type	Air cooled									
L.O Capacity (Liter)	40			100						
Outlet Size	65A Flange							80A Flange		
Noise Level (dB(A) ± 3)	78			82			85			
Size (LxWxH mm)	2500(2900)x 1500(1600)x 1800(1800)	2400(2800)x 1400(1500)x 1800(1800)	2650(3050)x 1500(1600)x 1950(1950)	2550(2750)x 1400(1500)x 1950(2000)	2700(3200)x 1500(1600)x 2000(2000)	2600(3100)x 1400(1500)x 2000(2000)	2800(3300)x 1700(1900)x 2100(2100)	2700(3200)x 1600(1800)x 2100(2100)		
Weight (Kg)	2050 (2150)	2000 (2100)	2450 (2550)	2400 (2500)	3350 (3450)	3300 (3400)	3850 (4050)	3800 (4000)		

Model	NeX-	220AB(i)	220AG(i)	260AB(i)	260AG(i)	300AB(i)	300AG(i)	370AB(i)	370AG(i)
Capacity (m <sup>3</sup> /min / CFM)	7 Bar	38.4 / 1356		46.5 / 1642		52.9 / 1868		71.9 / 2539	
	8 Bar	38.4 / 1356		42.1 / 1487		47.9 / 1692		69.5 / 2455	
	9 Bar	32.9 / 1162		42.0 / 1483		47.8 / 1688		65.0 / 2296	
	13 Bar	27.8 / 982		32.6 / 1151		38.1 / 1346		54.7 / 1932	
Power Supply (V / Ph / Hz)	200 ~ 460 / 3 / 50 ~ 60								
Motor Output (kW / HP)	220 / 300		260 / 350		300 / 400		370 / 500		
Starting Type	Star - Delta (Inverter)								
Driven Type	Direct								
Cooling Type	Air cooled								
L.O Capacity (Liter)	200						300		
Outlet Size	80A Flange			100A Flange					
Noise Level (dB(A) ± 3)	90								
Size (LxWxH mm)	2900(3400)x 1900(2000)x 2100(2100)	2800(3300)x 1800(1900)x 2100(2100)	3200(3650)x 2300(2400)x 2100(2100)	3100(3550)x 2200(2300)x 2100(2100)	3600(4100)x 2400(2900)x 2200(2200)	3500(4000)x 2300(2800)x 2200(2200)	4100(4600)x 2600(3100)x 2300(2300)	4000(4500)x 2500(3000)x 2300(2300)	
Weight (Kg)	4500 (4700)	4450 (4850)	5050 (5250)	5000 (5200)	5550 (5850)	5500 (5800)	6050 (6350)	6000 (6300)	

### Caution

- Some specifications in this catalogue can be changed without notice.
- The maximum ambient temperature is 45 °C. (Please consult us in case of above 55 °C.)
- The flow is under the condition of ambient temperature 20 °C, humidity 60 % and at atmospheric pressure.
- Capacity and power deviation are approximately ± 5%.
- Dimension size can be changed according to the valve option.
- High Voltage Motor is available.



[ NeX-75WB ]

## NeX-B / G Series Water cooled

Caution : (i) is the model with inverter and the data in the ( ) is the specification of model with inverter.  
2. The data in the [ ] is HP under condition that pressure is 13Bar.

Model	NeX-	15WB(i)	22WB(i)	30WB(i)	37WB(i)	45WB(i)	55WB(i)	55WG(i)	75WB(i)	75WG(i)
Capacity (m <sup>3</sup> / min / CFM)	7 Bar	2.54 / 90	3.86 / 136	4.72 / 167	6.93 / 245	7.37 / 260	10.8 / 381		14.6 / 516	
	8 Bar	2.44 / 86	3.65 / 129	4.72 / 167	6.16 / 218	7.34 / 259	10.0 / 353		13.1 / 463	
	9 Bar	2.43 / 86	3.64 / 129	4.71 / 166	6.03 / 213	7.30 / 258	9.6 / 339		12.7 / 449	
	13 Bar	2.41 / 85	3.58 / 126	4.66 / 165	5.80 / 205	6.75 / 238	9.8 / 346		12.2 / 431	
Power Supply (V / Ph / Hz)	200 ~ 460 / 3 / 50 ~ 60									
Motor Output (kW / HP)	15 / 20 [25]	22 / 30 [40]	30 / 40 [50]	37 / 50 [60]	45 / 60 [75]	55 / 75 [100]		75 / 100 [120]		
Starting Type	D.O.L (Inverter)			Star - Delta (Inverter)						
Driven Type	Direct									
Cooling Type	Water cooled									
L.O Capacity (Liter)	18	20				40				
Outlet Size	PT 3/4"	PT 1 1/4"			PT 1 1/2"			PT 2"		
C.W Inlet / Outlet Size		PT 1"			PT 1 1/4"			PT 1 1/2"		
Noise Level (dB(A) ± 3)	69	70	71	73				74		
Size (LxWxH mm)	1250(1400)x 1100(1100)x 1300(1300)	1300(1600)x 1100(1300)x 1300(1400)	1500(1600)x 1200(1300)x 1300(1400)	1750(1900)x 1300(1300)x 1540(1540)			2200(2500)x 1400(1400)x 1520(1520)			
Weight (Kg)	670 (720)	720 (770)	750 (800)	950 (1000)	1010 (1060)	1560 (1630)		1670 (1745)		

Caution

1. Some specifications in this catalogue can be changed without notice. | 2. The maximum ambient temperature is 45 °C. (Please consult us in case of above 55 °C.)
3. The flow is under the condition of ambient temperature 20 °C, humidity 60 % and at atmospheric pressure. | 4. Capacity and power deviation are approximately ± 5%.
5. Dimension size can be changed according to the valve option.

## NeX-B / G Series Water cooled

Caution : (i) is the model with inverter and the data in the ( ) is the specification of model with inverter.

Model	NeX-	90WB(i)	90WG(i)	110WB(i)	110WG(i)	160WB(i)	160WG(i)	185WB(i)	185WG(i)
Capacity (m <sup>3</sup> / min / CFM)	7 Bar	17.2 / 607		19.6 / 692		27.9 / 985		32.6 / 1151	
	8 Bar	14.1 / 498		18.3 / 646		27.9 / 985		32.4 / 1144	
	9 Bar	14.0 / 494		18.3 / 646		24.3 / 858		27.8 / 982	
	13 Bar	12.3 / 434		13.9 / 491		19.4 / 685		25.7 / 908	
Power Supply (V / Ph / Hz)	200 ~ 460 / 3 / 50 ~ 60								
Motor Output (kW / HP)/	90 / 120		110 / 150		160 / 215		185 / 250		
Starting Type	Star - Delta (Inverter)								
Driven Type	Direct								
Cooling Type	Water cooled								
L.O Capacity (Liter)	40			100					
Outlet Size	65A Flange							80A Flange	
C.W Inlet / Outlet Size	50A Flange							65A Flange	
Noise Level (dB(A) ± 3)	77			81			84		
Size (LxWxH mm)	2500(2900)x 1700(1800)x 1900(1900)	2400(2800)x 1600(1700)x 1900(1900)	2650(3050)x 1700(1800)x 1900(1900)	2550(2950)x 1600(1700)x 1900(1900)	2800(3300)x 1900(2000)x 1900(1900)	2700(3200)x 1800(1900)x 1900(1900)	2900(3400)x 2000(2100)x 2000(2000)	2800(3300)x 1900(2000)x 2000(2000)	
Weight (Kg)	2150 (2250)	2100 (2200)	2550 (2650)	2500 (2600)	3450 (3550)	3400 (3500)	3950 (4150)	3900 (4100)	

Model	NeX-	220WB(i)	220WG(i)	260WB(i)	260WG(i)	300WB(i)	300WG(i)	370WB(i)	370WG(i)	400WG(i)
Capacity (m <sup>3</sup> / min / CFM)	7 Bar	38.4 / 1356		46.5 / 1642		52.9 / 1868		71.9 / 2539		76.9 / 2716
	8 Bar	38.4 / 1356		42.1 / 1487		47.9 / 1692		69.5 / 2455		74.2 / 2620
	9 Bar	32.9 / 1162		42.0 / 1483		47.8 / 1688		65.0 / 2296		71.7 / 2532
	13 Bar	27.8 / 982		32.6 / 1151		38.1 / 1346		54.7 / 1932		58.5 / 2066
Power Supply (V / Ph / Hz)	200 ~ 460 / 3 / 50 ~ 60									
Motor Output (kW / HP)/	220 / 300		260 / 350		300 / 400		370 / 500		400 / 540	
Starting Type	Star - Delta (Inverter)									
Driven Type	Direct									
Cooling Type	Water cooled									
L.O Capacity (Liter)	200						300			
Outlet Size	80A Flange			100A Flange						
C.W Inlet / Outlet Size	65A Flange			80A Flange						
Noise Level (dB(A) ± 3)	89									
Size (LxWxH mm)	2900(3400)x 2000(2100)x 2000(2000)	2800(3300)x 1900(2000)x 2000(2000)	3300(3750)x 2400(2600)x 2100(2100)	3200(3650)x 2300(2500)x 2100(2100)	3800(4300)x 2600(2800)x 2100(2100)	3700(4200)x 2500(2700)x 2100(2100)	4100(4600)x 2800(3100)x 2300(2300)	4000(4500)x 2700(3000)x 2300(2300)	4500(5000)x 2800(3000)x 2300(2300)	
Weight (Kg)	4650 (4850)	4600 (4800)	5550 (5850)	5500 (5800)	5850 (6050)	5800 (6000)	6350 (6650)	6300 (6600)	7000 (7300)	

### Caution

- Some specifications in this catalogue can be changed without notice. | 2. The maximum ambient temperature is 45 °C. (Please consult us in case of above 55 °C.)
- The flow is under the condition of ambient temperature 20 °C, humidity 60 % and at atmospheric pressure. | 4. Capacity and power deviation are approximately ± 5%.
- Dimension size can be changed according to the valve option. | 6. High Voltage Motor is available.



Oil-free Screw Compressor **NeF Series Air / Water cooled / Inverter (standard)**



[ NeF-160Ai ]



[ NeF-160Wi ]

- **Low Noise** Reduced high-frequency noise emitted from air-end by being equipped with a newly developed muffler
- **Low Vibration** Ensured smooth, quiet running by optimized arrangement of antifriction bearings
- **High Efficiency** Achieved high efficiency of compression by its asymmetric two-stage compressing structure made of stainless steel
- **Safety** Ensured superior corrosion resistance and reliability even during long operation by applying ultra-coating on the rotors
- **Convenience** Eased monitoring of all parameters and running conditions at once through 10" large color LCD

**Application**



**NeF-A Series Air cooled Inverter Type**

Caution : The data in the [ ] is HP under condition that pressure is 10.5 Bar.

Model	NeF-	37Ai	45Ai	55Ai	75Ai	90Ai	110Ai	160Ai	220Ai
Capacity (m <sup>3</sup> / min / CFM)	7 Bar	4.75 / 168	6.66 / 235	8.49 / 300	12.05 / 426	14.2 / 501	17.1 / 604	25.1 / 886	30.7 / 1084
	8 Bar	4.73 / 167	6.64 / 235	8.47 / 299	12.03 / 425	14.1 / 498	17.0 / 600	25.1 / 886	30.7 / 1084
	9 Bar	4.71 / 166	5.52 / 195	7.17 / 253	10.74 / 379	12.7 / 449	17.0 / 600	22.9 / 809	30.7 / 1084
	10.5 Bar	4.68 / 165	5.48 / 194	7.13 / 252	10.71 / 378	12.6 / 445	15.1 / 533	22.8 / 805	30.6 / 1081
Power Supply (V / Ph / Hz)	200 ~ 460 / 3 / 50 ~ 60								
Motor Output (kW / HP)	37 / 50 [60]	45 / 60 [75]	55 / 75	75 / 100	90 / 120	110 / 150	160 / 215	220 / 300	
Starting Type	Inverter								
Driven Type	Direct								
Cooling Type	Air cooled								
Outlet Size	PT 1 1/2"		PT 2"		65A Flange			80A Flange	
Noise Level (dB(A) ± 3)	78		82			85			
Size (LxWxH mm)	2650x1500x1840				2900x1900x1850			3000x1900x2000	
Weight (Kg)	2700	2850	2900	3000	3400	3600	3900	5100	

**Caution**

1. Some specifications in this catalogue can be changed without notice. | 2. The maximum ambient temperature is 45 °C. (Please consult us in case of above 55 °C.)
3. The flow is under the condition of ambient temperature 20 °C, humidity 60% and at atmospheric pressure. | 4. Capacity and power deviation are approximately ± 5%.
5. Dimension size can be changed according to the valve option. | 6. High Voltage Motor is available. Please consult us whether to install an inverter or not.
7. Normal type without an inverter is available. Please contact us

## NeF-W Water cooled Inverter Type

Caution : The data in the [ ] is HP under condition that pressure is 10.5 Bar.

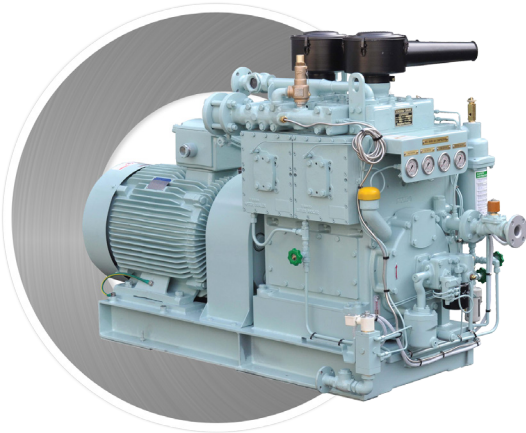
Model	NeF-	37Wi	45Wi	55Wi	75Wi	90Wi	110Wi	160Wi	220Wi
Capacity (m <sup>3</sup> /min/CFM)	7 Bar	4.75 / 168	6.66 / 235	8.49 / 300	12.05 / 426	14.2 / 501	17.1 / 604	25.1 / 886	30.7 / 1084
	8 Bar	4.73 / 167	6.64 / 235	8.47 / 299	12.03 / 425	14.1 / 498	17.0 / 600	25.1 / 886	30.7 / 1084
	9 Bar	4.71 / 166	5.52 / 195	7.17 / 253	10.74 / 379	12.7 / 449	17.0 / 600	22.9 / 809	30.7 / 1084
	10.5 Bar	4.68 / 165	5.48 / 194	7.13 / 252	10.71 / 378	12.6 / 445	15.1 / 533	22.8 / 805	30.6 / 1081
Power Supply (V / Ph / Hz)	200 ~ 460 / 3 / 50 ~ 60								
Motor Output (kW / HP)	37 / 50 [60]	45 / 60 [75]	55 / 75	75 / 100	90 / 120	110 / 150	160 / 215	220 / 300	
Starting Type	Inverter								
Driven Type	Direct								
Cooling Type	Water cooled								
Outlet Size	PT 1 1/2"		PT 2"		65A Flange			80A Flange	
C.W Inlet / Outlet Size	PT 1 1/4"		PT 1 1/2"		50A Flange			65A Flange	
Noise Level (dB(A) ± 3)	76		80			83			
Size (LxWxH mm)	2400x1600x1630		2650x1600x1630		2850x1700x1780			3100x1800x1900	
Weight (Kg)	2550	2600	2700	3000	3230	3500	3800	5200	

Model	NeF-	260Wi	320Wi	370Wi
Capacity (m <sup>3</sup> /min/CFM)	7 Bar	43.7 / 1543	51.7 / 1826	58.2 / 2055
	8 Bar	43.7 / 1543	51.6 / 1822	58.1 / 2052
	9 Bar	40.8 / 1441	46.6 / 1646	58.0 / 2048
	10.5 Bar	36.7 / 1296	46.5 / 1642	57.9 / 2045
Power Supply (V / Ph / Hz)	200 ~ 460 / 3 / 50 ~ 60			
Motor Output (kW / HP)	260 / 350	320 / 430	370 / 500 [565]	
Starting Type	Inverter			
Driven Type	Direct			
Cooling Type	Water cooled			
Outlet Size	100A Flange			
C.W Inlet / Outlet Size	80A Flange			
Noise Level (dB(A) ± 3)	93			
Size (LxWxH mm)	4000x2450x2300			
Weight (Kg)	6200	6900	7200	

### Caution

1. Some specifications in this catalogue can be changed without notice. | 2. The maximum ambient temperature is 45 °C. (Please consult us in case of above 55 °C.)
3. The flow is under the condition of ambient temperature 20 °C, humidity 60% and at atmospheric pressure. | 4. Capacity and power deviation are approximately ± 5%.
5. Dimension size can be changed according to the valve option. | 6. High Voltage Motor is available. Please consult us whether to install an inverter or not.
7. Normal type without an inverter is available. Please contact us.

## Water-cooled Piston Compressor **H** Series



[ H-274 ]

- The verified product over a period of time
- Maximization of part compatibility between models by module system
- Saved maintenance cost through long life-span and high stability
- Simple and easy assembly and disassembly

### Application



## 30Bar High Pressure Piston Compressor

Caution : The data in the ( ) is the specification of 50Hz.

Model		H-63	H-64	H-73	H-74	H-264	H-273	H-274	H-373	H-374	
Working Pressure (Bar / PSI)		7 ~ 30 / 102 ~ 435									
Capacity (m <sup>3</sup> /hr / CFM)	1200 RPM	65 / 38	85 / 50	110 / 65	140 / 82	170 / 100	220 / 129	275 / 162	330 / 194	415 / 244	
	(1500 RPM)	(80 / 47)	(105 / 62)	(135 / 79)	(175 / 103)	(210 / 124)	(275 / 162)	(340 / 200)	(410 / 241)	(515 / 303)	
	1800 RPM	95 / 56	125 / 74	160 / 94	205 / 121	250 / 147	325 / 191	405 / 238	485 / 285	610 / 359	
Motor Output (kW / HP)	30 Bar	1200 RPM	15 / 20	19 / 25	30 / 40		37 / 50	45 / 60	55 / 75	75 / 100	90 / 120
		(1500 RPM)	(19 / 25)	(30 / 40)		(37 / 50)	(55 / 75)	(60 / 80)	(75 / 100)	(90 / 120)	(110 / 150)
		1800 RPM	22 / 30	30 / 40	37 / 50	55 / 75	60 / 80	75 / 100	90 / 120	110 / 150	132 / 177
Motor Output (kW / HP)	7~9 Bar	1200 RPM	11 / 15	15 / 20	19 / 25	22 / 30	30 / 40	37 / 50	45 / 60	55 / 75	75 / 100
		(1500 RPM)	(15 / 20)	(22 / 30)		(30 / 40)	(45 / 60)		(55 / 75)	(75 / 100)	(90 / 120)
		1800 RPM	19 / 25	30 / 40		37 / 50	55 / 75		75 / 100	90 / 120	110 / 150
Motor Output (kW / HP)	15 Bar	1200 RPM	15 / 20		19 / 25	30 / 40		45 / 60	55 / 75	60 / 80	75 / 100
		(1500 RPM)	(15 / 20)	(22 / 30)	(30 / 40)		(45 / 60)	(55 / 75)	(75 / 100)		(90 / 120)
		1800 RPM	19 / 25	30 / 40	37 / 50		55 / 75	60 / 80	75 / 100	90 / 120	110 / 150
Motor Output (kW / HP)	25 Bar	1200 RPM	15 / 20	19 / 25	30 / 40		37 / 50	45 / 60	55 / 75	75 / 100	90 / 120
		(1500 RPM)	(19 / 25)	(30 / 40)		(37 / 50)	(45 / 60)	(55 / 75)	(75 / 100)	(90 / 120)	(110 / 150)
		1800 RPM	22 / 30	30 / 40	37 / 50	45 / 60	55 / 75	75 / 100	90 / 120	110 / 150	132 / 177
Power Supply (V / Ph / Hz)		200 ~ 460 / 3 / 50 ~ 60									
Starting Type		D.O.L or Star - Delta									
Driven Type		Direct									
Cooling Type		Water cooled									
L.O Capacity (Liter)		12				25			38		
Outlet Size		30K 32A Flange		30K 40A Flange			30K 50A Flange		30K 65A Flange		
C.W Inlet / Outlet Size		5K 25A Flange				5K 32A Flange				5K 40A Flange	
Size (LxWxH mm)		1550x 945x1300	1595x 945x1300	1725x 945x1336	1740x 945x1336	2020x 945x1336	2035x 945x1336	2050x 945x1336	2800x 1050x1406	2890x 1050x1406	
Weight (Kg)		845	865	1020	1070	1445	1490	1530	2240	2340	

### Caution

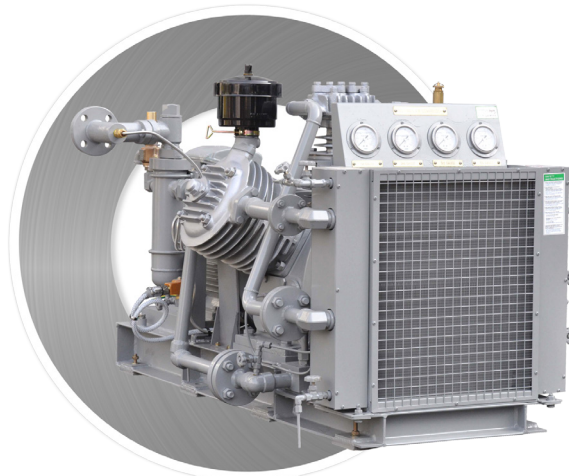
- Some specifications in this catalogue can be changed without notice.
- The maximum ambient temperature is 45°C. (Please consult us in case of above 55°C.)
- The flow is under the condition of ambient temperature 20°C, humidity 60% and at atmospheric pressure.
- Capacity and power deviation are approximately ± 5%.
- Dimension size can be changed according to the valve option.
- Production is available with the pressure unit over 30 bar. Please contact us.



## Air-cooled Piston Compressor **CM, AH** Series



[AHI-200]



[AHW-60A]

- The verified product over a period of time
- Can be applied from industry fields to large vessels due to its various capacities
- Save maintenance cost due to long life and high safe
- Simple and easy assembly and disassembly
- Upright air-cooled structure

### Application



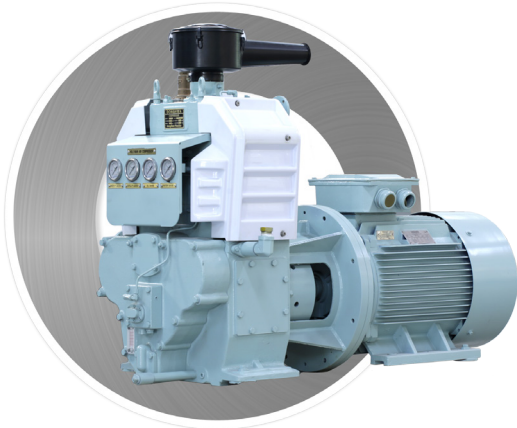
## 30Bar High Pressure Piston Compressor

Model	CMA-15	CMA-15E	AHW-40A	AHW-60A	AHV-20	AHV-20E	AHV-30	AHV-30E	AHV-40	AHV-60	AHI-80	AHI-100	AHI-130	AHI-160	AHI-200	
Working Pressure (Bar / PSI)	7 ~ 30 / 102 ~ 435															
Cylinder	1		3			2										
Capacity (m <sup>3</sup> / hr / CFM)	15 / 9		40 / 24	60 / 35	20 / 12		30 / 18		40 / 24	60 / 35	80 / 47	100 / 59	130 / 77	160 / 94	200 / 118	
Motor Output (kW / HP)	30 Bar	3.7 / 5 (10 HP)	11 / 15	15 / 20	5.5 / 7.5	(10 HP)	7.5 / 10	(10 HP)	11 / 15	15 / 20	19 / 25	30 / 40	37 / 50	45 / 60		
	7~9 Bar		7.5 / 10	11 / 15	3.7 / 5		5.5 / 7.5		7.5 / 10	11 / 15	15 / 20	22 / 30	30 / 40	37 / 50		
	15 Bar		11 / 15	15 / 20	5.5 / 7.5		7.5 / 10		11 / 15	15 / 20	19 / 25	30 / 40	37 / 50	45 / 60		
	25 Bar															
Power Supply (V / Ph / Hz)	200 ~ 460 / 3 / 50 ~ 60															
Starting Type	D.O.L	Engine	D.O.L		Engine	D.O.L	Engine	D.O.L	D.O.L			D.O.L or Star - Delta				
Driven Type	V-belt		Direct			V-belt	Direct	V-belt	Direct							
Cooling Type	Air cooled															
L.O Capacity (Liter)	2.1		5.5			2.8			5.8			25				
Outlet Size	30K 15A Flange		30K 25A Flange										30K 40A Flange			
Size (LxWxH mm)	905x456x790	1306x516x875	1480x920x876	1520x920x876	1100x825x820	1878x606x895	1100x825x820	1878x606x895	1260x800x1100		1023x1258x1845	1023x1258x1910				
Weight (Kg)	175	271	630	655	420	436	430	436	700	725	1030	1094	1120			

### Caution

1. Some specifications in this catalogue can be changed without notice. | 2. The maximum ambient temperature is 45 °C. (Please consult us in case of above 55 °C.)
3. The flow is under the condition of ambient temperature 20 °C, humidity 60 % and at atmospheric pressure. | 4. Capacity and power deviation are approximately ± 5%.
5. Dimension size can be changed according to the valve option. | 6. Production is available with the pressure unit over 30 bar. Please contact us.

Water-cooled Piston Compressor **NeX-M** Series



[ NeX-200M ]

- The all new product manufactured based on the accumulated know-how
- Newly Cooling system
- Maximization of part compatibility between models by module system
- Low Noise, Compact Design

**Application**



**30Bar High Pressure** Piston Compressor

Caution : The data in the ( ) is the specification of 50Hz.

Model		NeX-	155M	200M	320M	400M
Working Pressure (Bar / PSI)		7 ~ 30 / 102 ~ 435				
Capacity (m <sup>3</sup> / hr / CFM)		1200 RPM	110 / 65	140 / 82	220 / 129	275 / 162
		(1500 RPM)	(135 / 79)	(175 / 103)	(275 / 162)	(340 / 200)
		1800 RPM	160 / 94	205 / 121	325 / 191	405 / 238
Motor Output (kW / HP)	30 Bar	1200 RPM	30 / 40		45 / 60	55 / 75
		(1500 RPM)	(30 / 40)	(37 / 50)	(60 / 80)	(75 / 100)
		1800 RPM	37 / 50	55 / 75	75 / 100	90 / 120
Motor Output (kW / HP)	7~9 Bar	1200 RPM	19 / 25	22 / 30	37 / 50	45 / 60
		(1500 RPM)	(22 / 30)	(30 / 40)	(45 / 60)	(55 / 75)
		1800 RPM	30 / 40	37 / 50	55 / 75	75 / 100
Motor Output (kW / HP)	15 Bar	1200 RPM	19 / 25	30 / 40	45 / 60	55 / 75
		(1500 RPM)	(30 / 40)		(55 / 75)	(75 / 100)
		1800 RPM	37 / 50		75 / 100	
Motor Output (kW / HP)	25 Bar	1200 RPM	30 / 40		45 / 60	55 / 75
		(1500 RPM)	(30 / 40)	(37 / 50)	(55 / 75)	(75 / 100)
		1800 RPM	37 / 50	45 / 60	75 / 100	90 / 120
Power Supply (V / Ph / Hz)		200 ~ 460 / 3 / 50 ~ 60				
Starting Type		D.O.L or Star - Delta				
Driven Type		Direct				
Cooling Type		Water cooled				
L.O Capacity (Liter)		16			33	
Outlet Size		30K 40A Flange			30K 50A Flange	
C.W Inlet / Outlet Size		5K 25A Flange			5K 32A Flange	
Size (LxWxH mm)		1455x700x1170	1470x700x1170	1785x700x1170	1815x700x1170	
Weight (Kg)		930	980	1400	1450	

Caution

- Some specifications in this catalogue can be changed without notice. | 2. The maximum ambient temperature is 45 °C. (Please consult us in case of above 55 °C.)
- The flow is under the condition of ambient temperature 20 °C, humidity 60 % and at atmospheric pressure. | 4. Capacity and power deviation are approximately ± 5%.
5. Dimension size can be changed according to the valve option. | 6. Production is available with the pressure unit over 30 bar. Please contact us.

## Air-cooled High Pressure Piston Compressor **NeX-H** Series



[ NeX-15H ]

- Ultra-High Pressure to be used in special environments that require high pressure
- High efficiency, save energy consumption by applying the optimal rotational speed, reasonable air circuit and use of high efficiency motor
- High quality high reliability due to a thorough quality inspection system

### Application



## 350Bar High Pressure Piston Compressor

Model	NeX-	3.7H	5.5H	7.5H	15H	22H	37H
Working Pressure (Bar / PSI)	200 ~ 350 / 2900 ~ 5076						
Cylinder	3			4			
Capacity (m <sup>3</sup> / hr / CFM)	7.3 / 4.3	11 / 6.5	16 / 9.4	30 / 18	45 / 26	74 / 44	
Motor Output (kW / HP)	350 Bar	5.5 / 7.5	7.5 / 10	11 / 15	19 / 25	30 / 40	45 / 60
	300 Bar						
	250 Bar	3.7 / 5	5.5 / 7.5	7.5 / 10	15 / 20	22 / 30	37 / 50
	200 Bar						
Power Supply (V / Ph / Hz)	200 ~ 460 / 3 / 50 ~ 60						
Starting Type	D.O.L					Star - Delta	
Driven Type	Belt						
Cooling Type	Air cooled						
L.O Capacity (Liter)	5.5					15	
Outlet Size	PT 1/2"					PT 1"	
Size (LxWxH mm)	490x1015x595			700x1450x850		840x1740x1020	
Weight (Kg)	420			600		720	

### Caution

1. Some specifications in this catalogue can be changed without notice. | 2. The maximum ambient temperature is 45 °C. (Please consult us in case of above 55 °C.)
3. The flow is under the condition of ambient temperature 20 °C, humidity 60 % and at atmospheric pressure. | 4. Capacity and power deviation are approximately ± 5%.
5. Dimension size can be changed according to the valve option.



Gas compressor series **Air-cooled / Water-cooled / Oil-injection / Oil-free**



[ NeX-410WGi ]



[ NeX-75A ]

- Gas compressor of DongHwa Pneutec compresses various types of gas and compressed gas is used in many industries.

**Application**



- Application BOG, Methane, Nitrogen, Argon, Hydrogen, Helium, Carbon dioxide
- Pressure 1Bar~350Bar
- Capacity 1~3,000 m<sup>3</sup>/hr
- Electricity 5.5kW~420kW



# Air Cleaning System

## Small Refrigerated Air Dryer

Research indicates that many customers want reliability a dry compressed air at an affordable price. No fancy bells and whistles-just dry air, pure and simple. These series non-cycling dryers were designed to meet these demands.



## Midium-Large Refrigerated Air Dryer

These series utilizes advanced heat exchanger, separation and refrigeration technology. It's a revolutionary that uses an innovative, simplified refrigeration circuit to provide dependable operation, low operating cost and versatile installation. Performs in rated conditions of 75 to 6000scfm.



## Refrigerated Air Dryer (High Inlet Temperature)

These series replaces four separate components; the aftercooler, separator, dryer and filter, with one compact package. Guaranteed to cool, dry and clean your compressed air. These series dryers are the smart choice.



## Desiccant Air Dryers (Heatless)

These series presents traditional heatless drying technology. Using a simple timer based controller, these are designed to deliver maximum value to applications that operate at-or-near full capacity. Automatic time controlled bed regeneration cycles offer consistent performance and economy of purchase.



## Desiccant Air Dryers (External Heated)

These series desiccant dryers are designed and built for plant & instrument air application where the lower purge consumption is required. These dryers are using the small portion of purge air heated by external heater for regeneration.



## Blower Purge Desiccant Air Dryers

As the air compressor is the most costly system component to purchase and, it uses more electrical energy than the rest of the system combined, it is wise to ensure that the smallest air compressor is installed. These dryers are 100% efficient at delivering full supply-side compressor capacity. Therefore users benefit from the ability to purchase a less expensive air compressor and, a 20% reduction in compressor operating costs.



## Air Line Filter

Energy costs continue to escalate globally, having a negative impact on plant profitability and production costs. Sustainability initiatives in plant operations must be implemented to maintain a competitive advantage. Air treatment manufacturers are challenged to design equipment that is cost effective. Delivers optimum performance and consumes less energy. These Series is the ideal solution to remove contamination from compressed air systems and save energy. These series employs technological advancements in filtration materials and design to ensure premium compressed air quality and low operational costs.



## After Cooler

If there is moisture in the compressed air, this leads various industrial pneumatic devices to lower qualities and shorter durability. Therefore, the compressed air should be dried and chilled before using it. These series after cooler, an essential supplementary device to supply lower temperature compressed air, condensate the water vapor and remove it with cooling down high temperature and saturated air initially.





# Info of Genuine Spare Parts



**DongHwa Pneutec**

**Nexkomp**  
Air / Gas compressor

Take a long term view on quality and make an investment.

This is the reason why you have to use the genuine spare parts from DongHwa Pneutec.

Our genuine spare parts are optimized for our respective products and this is the only way to ensure the best performance and safety.

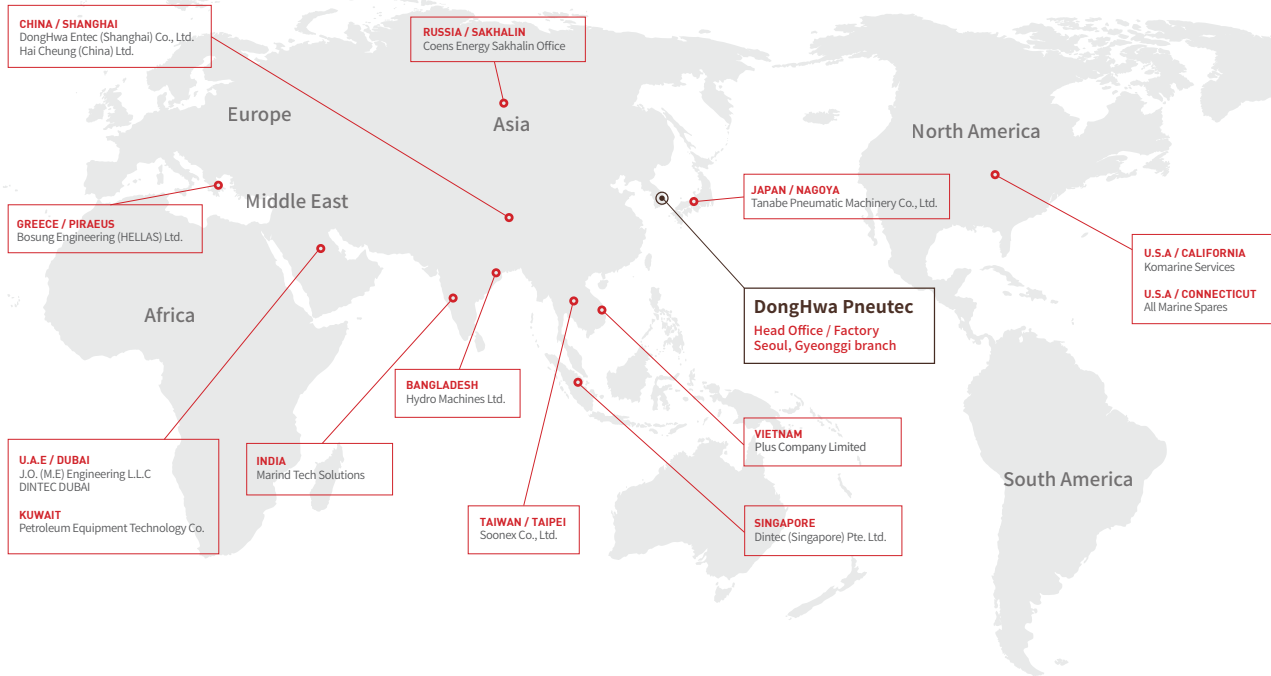
We provide same quality assurance program for both original parts and genuine spare parts.

Unauthorized spare parts other than genuine spare parts of DongHwa Pneutec may cause degradation of performance or malfunction.

## Info of Genuine Spare Parts

- |              |                      |
|--------------|----------------------|
| ● Sales Team | sales@dhkomp.co.kr   |
| ● A/S Team   | service@dhkomp.co.kr |
| ● TEL        | 051-974-4800         |
| ● FAX        | 051-974-4896         |

# Global service network



◎ **DongHwa Pneutec**

**Head Office / Factory**

(Gurang-dong) 75, Mieumsandan-ro 8 beon-gil, Ganseo-gu, Busan, Republic of Korea (Zipcode: 46748)  
Tel : +82-51-974-4800  
Fax : +82-51-974-4896

**Seoul, Gyeonggi branch**

(Mongnae-dong) 283, Shinwon-ro, Danwon-gu, Ansan, Gyeonggi-do, Republic of Korea (Zipcode: 15602)  
Tel : +82-31-493-4801

E-Mail : sales@dhkomp.co.kr  
Homepage : www.dhkomp.co.kr

◎ **CHINA / SHANGHAI**

DongHwa Entec (Shanghai) Co., Ltd.  
No. 2508, Jiangshan Road, Luchaogang  
Tel : +86-21-5197-5001  
Fax : +86-21-5197-5005  
E-Mail : sbk@dh.co.kr

Hai Cheung (China) Ltd.  
8/F, Grand Ocean Tower,  
No.1200 Pudong Avenue  
Tel : +86-21-6888-9889  
Fax : +86-21-6329-3888  
E-Mail: gus\_hou@haicheungchina.com

◎ **U.A.E / DUBAI**

J.O. (M.E) Engineering L.L.C  
598-1132, Dubai investment Park-1  
Tel : +971-4882-9334  
Fax : +971-4882-9338  
E-Mail : info@jo-me.com  
Dintec Dubai  
No. 201. Tameem House Building TECOM C  
Tel : +971-(0)52-864-4674  
E-Mail : gdchoi@dintec.co.kr

◎ **KUWAIT**

Petroleum Equipment Technology Co.  
P.O. Box 10237, Shuaiba 65454  
Tel : +965-2398-7326  
Fax : +965 2398 6374  
E-Mail: vjsimoes@petco.net

◎ **GREECE / PIRAEUS**

Bosung Engineering (HELLAS) Ltd.  
14, Skouze Street, 185,36  
Tel : +30-210-4187010  
Fax : +30-210-4187011  
E-Mail : bosung@bosunghellas.gr

◎ **RUSSIA / SAKHALIN**

Coens Energy Sakhalin Office  
35A-2, Purkaeva Street, Yuzhno-Sakhalinsk  
Tel : +7-4242-460-841  
E-Mail : sakhalin@coens.com

◎ **INDIA**

Marind Tech Solutions  
A-101, Bhaveshwar Arcade, L.B.S. Marg,  
Ghatkopar(W)  
Mumbai - 400 086  
Tel : +91-22-2500-6623  
Fax : +91-22-2500-6624  
E-Mail : sales@marindtech.com

◎ **BANGLADESH**

Hydro Machines Ltd.  
15 New Baily Road 1st Floor Building #04  
Dhaka-1000  
Tel : +880-2-9346780  
Fax : +880-2-9341044  
E-Mail : office@hydro-machines.com

◎ **JAPAN / NAGOYA**

Tanabe Pneumatic Machinery Co., Ltd.  
1, 1-Chome, Kawanish, Komaki, Aichi  
Tel : +81-568-76-4191  
Fax : +81-568-75-2627  
E-Mail : info@tanacomp.co.jp

◎ **TAIWAN / TAIPEI**

Soonex Co., Ltd.  
10F, 57, Sec 2, Tunhwa,S.Rodd,10681  
Tel : +886-2-2707-0137  
Fax : +886+-2-2701-0157  
E-Mail : service@soonex.com.tw

◎ **SINGAPORE**

Dintec (Singapore) Pte. Ltd.  
3 International Business Park, #05-13,  
Nordic European Centre  
Tel : +65-6896-4494  
Fax : +65-6896-4244  
E-Mail : taufiq@dintec.com.sg

◎ **U.S.A / CALIFORNIA**

Komarine Services  
923 E.F Street, Wilmington  
Tel : +1-310-780-6095  
E-Mail : joon.an@komarines.com

◎ **U.S.A / CONNECTICUT**

All Marine Spares  
375 Fairfield Ave., Building 5, Stamford,  
CT 06902  
Tel : +1-203-536-2674  
E-Mail : sales@allmarinespares.com

◎ **VIETNAM**

Plus Company Limited  
Thon Thuong Thuy, Xa Dirc Thuong,  
Huyen Hoai Dirc, Thanh pho Ha Noi  
Tel : +84-906-998-978  
E-Mail : plusshop@naver.com

# Location



## Head Office / Factory

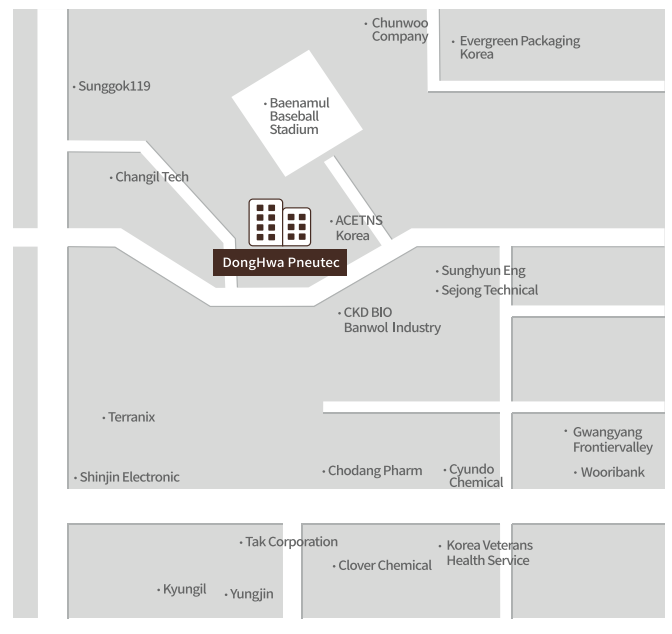
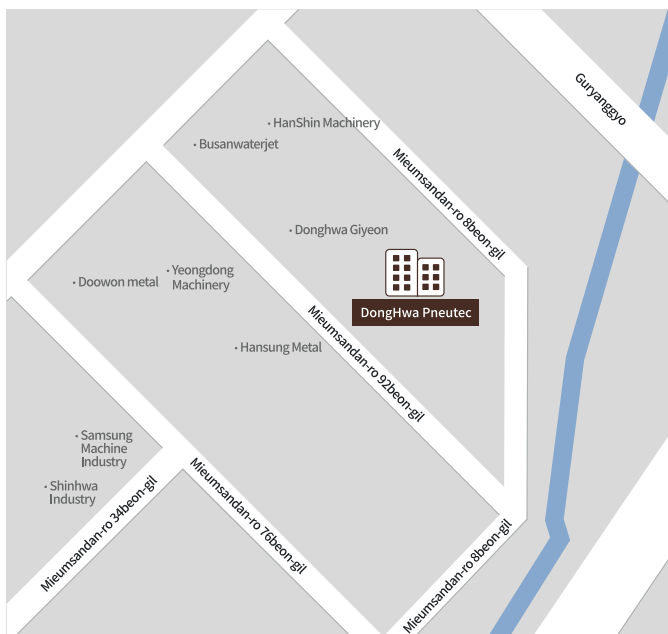
(Gurang-dong) 75, Mieumsandan-ro 8beon-gil,  
 Ganseo-gu, Busan, Republic of Korea (Zipcode : 46748)

Tel : +82-51-974-4800 / Fax : +82-51-974-4896

## Seoul, Gyeonggi branch

(Mongnae-dong) 283, Shinwon-ro, Danwon-gu, Ansan,  
 Gyeonggi-do, Republic of Korea (Zipcode : 15602)

Tel : +82-31-493-4801



# Nexkomp

Air / Gas compressor

**DongHwa Pneutec**  
manufacturer of Air Compressor

## Head Office / Factory

(Gurang-dong) 75, Mieumsandan-ro 8beon-gil,  
Ganseo-gu, Busan, Republic of Korea (Zipcode : 46748)  
Tel : +82-51-974-4800 / Fax : +82-51-974-4896

## Seoul, Gyeonggi branch

(Mongnae-dong) 283, Shinwon-ro, Danwon-gu, Ansan,  
Gyeonggi-do, Republic of Korea (Zipcode : 15602)  
Tel : +82-31-493-4801

E-mail : [sales@dhkomp.co.kr](mailto:sales@dhkomp.co.kr)  
Homepage : [www.dhkomp.co.kr](http://www.dhkomp.co.kr)

